

TWIN ROTA MASSECUITE PUMP



PSP EQUIPMENTS
PVT LTD

Pump Technical Specifications

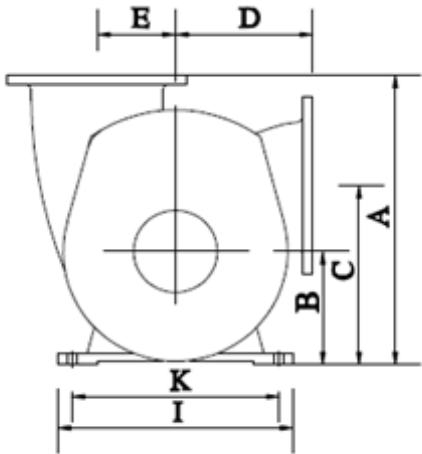
| Pump | Delivery x Suction (mm) | Pumping Material | Pump Speed (RPM) | Capacity (Ton/hr) |
|-------|-------------------------|--------------------------------------|------------------|-------------------|
| SR-6 | Ø150 x Ø150 | A, B, C - Magma A, B - Massecuite | 36 rpm | 25 |
| | | C - Massecuite | 29 rpm | 20 |
| TR-8 | Ø200 x Ø200 | A, B, C - Magma A, B - Massecuite | 36 rpm | 35 |
| | | C - Massecuite | 29 rpm | 30 |
| TR-10 | Ø250 x Ø250 | A, B, C - Magma A, B - Massecuite | 36 rpm | 50 |
| | | C - Massecuite | 29 rpm | 40 |
| TR-12 | Ø300 x Ø300 | A, B, C - Magma A, B - Massecuite | 36 rpm | 70 |
| | | C - Massecuite | 29 rpm | 55 |
| TR-14 | Ø355 x Ø355 | A, B, C - Magma A, B - Massecuite | 29 rpm | 95 |
| | | C - Massecuite | 24 rpm | 80 |
| TR-16 | Ø400 x Ø400 | A, B, C - Magma A, B - Massecuite | 29 rpm | 125 |
| | | C - Massecuite | 24 rpm | 100 |

*Note: TR-18 (Ø450 x Ø450) can be customized as per customer requirement.

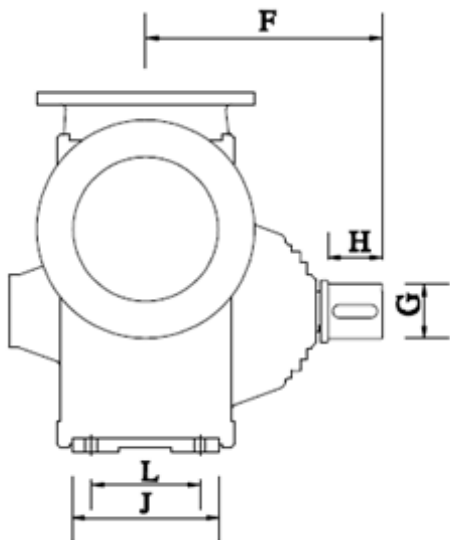
Applications In Sugar Factory

These pumps are primarily intended to handle high viscosity abrasive sugar media containing sugar crystals, such as A massecuite, B massecuite, C massecuite, magma, and dry seed of Sugar Industries.

Schematics



| Pump | A | B | C | D | E | K | I |
|--------|------|-----|-----|-----|-----|-----|-----|
| 8" TR | 610 | 235 | 360 | 300 | 160 | 400 | 460 |
| 10" TR | 725 | 280 | 430 | 340 | 180 | 500 | 570 |
| 12" TR | 755 | 295 | 467 | 350 | 200 | 530 | 600 |
| 14" TR | 865 | 325 | 503 | 415 | 210 | 620 | 690 |
| 16" TR | 940 | 360 | 570 | 450 | 220 | 670 | 750 |
| 18" TR | 1030 | 395 | 632 | 498 | 240 | 730 | 820 |



| Pump | F | G | H | L | J |
|--------|-----|-----|-----|-----|-----|
| 8" TR | 465 | 105 | 115 | 190 | 265 |
| 10" TR | 473 | 110 | 120 | 170 | 250 |
| 12" TR | 498 | 115 | 115 | 230 | 310 |
| 14" TR | 540 | 115 | 130 | 270 | 370 |
| 16" TR | 608 | 132 | 154 | 310 | 410 |
| 18" TR | 670 | 138 | 160 | 340 | 450 |



Features

- Replace seal kit, without opening pump cover.
- Reduced shaft load by 30 to 40%.
- Pulsation free – smooth flow.
- Cooling system for seal and NDE bush.
- Quick release sleeve design for coupling.
- Springless and Zero-Leak design.
- Reduce power consumption
- Extended life of wear parts and pump.



PSP EQUIPMENTS
PVT LTD

Head Office : A-82/7 Five Star
MIDC, Kagal - Kolhapur - 416 216
Maharashtra, India.

Phone +91 9860 444308

Email sales@pspequipments.com

Web www.pspequipments.com